

# THE GRAPEVINE

The Quarterly Newsletter of the Florida Family Child Care Home Association

Volume 33: Issue 4

HAPPY FALL, Y'ALL !!

October 2025

## President's Message: Heart Filled with Hope!

Today, as I reflect upon the first ninety days I have served as your President, I feel HOPEFUL. This initial period has given me the opportunity to gain a deeper understanding of our operations as well as what we are looking forward to in our strategic growth ahead.

As I have been working through these introductory months, I want to extend my sincerest gratitude to our entire membership. It is through your collective contributions and encouragement, that I keep going and WE continue to thrive. Your active engagement, commitment, and ongoing support are the very essence of our success, and I feel truly honored to serve alongside such a dedicated and uplifting community.

As a collective, our goal is to further our dedication to transparency and in doing this, include our members more and more. We want you to know that as always, all FULL board meetings of our association are open to our general membership. This inspires a greater openness and provides a better way for all members to engage with our strategic discussions.

Your expertise and perspective are invaluable to us, and we encourage your active attendance and contributions during these sessions. Your input is instrumental in shaping the future direction and achievements of our association and is much appreciated.

Future meeting information will be posted on our website and social media platforms, so keep tuned in. I invite and welcome you to be a part of our decision-making, because we are a team, and together we stand...

**together we grow.**

Sincerely,  
Gertrude Freeman Ford  
FFCCHA President



## Mensaje de Nuestra Presidente: Corazón Lleno De Esperanza

Hoy, al reflexionar sobre los primeros noventa días en los que he tenido el honor de servirles como su Presidenta, me siento con mucha esperanza. Este período inicial me ha brindado la oportunidad de comprender más a fondo nuestras operaciones, así como de visualizar con mayor claridad lo que nos depara nuestro crecimiento estratégico.

Durante estos meses de introducción, quiero expresar mi más sincero agradecimiento a toda nuestra membresía. Es gracias a sus contribuciones colectivas y al constante aliento que recibo de ustedes que sigo adelante y que NOSOTROS seguimos prosperando. Su participación activa, compromiso y apoyo continuo son la esencia misma de nuestro éxito, y me siento verdaderamente honrada de servir junto a una comunidad tan dedicada y alentadora.

Como colectivo, nuestro objetivo es profundizar nuestro compromiso con la transparencia e, igualmente, incluir cada vez más a nuestros miembros en este proceso. Queremos que sepan que, como siempre, todas las reuniones PLENAS de la junta directiva de nuestra asociación están abiertas a toda la membresía general. Esto promueve una mayor apertura y ofrece una mejor manera para que todos los miembros participen en nuestras discusiones estratégicas.

Su experiencia y perspectiva son invaluable para nosotros, y les animamos a asistir activamente y a contribuir durante estas sesiones. Sus aportes son fundamentales para dar forma al rumbo futuro y a los logros de nuestra asociación, y los valoramos profundamente.

La información sobre futuras reuniones se publicará en nuestro sitio web y en nuestras plataformas de redes sociales, así que manténganse atentos. Les invito y les doy la más cordial bienvenida a ser parte de nuestro proceso de toma de decisiones, porque somos un equipo y, juntos, nos mantenemos firmes... **juntos, crecemos.**

Gertrude Freeman Ford  
FFCCHA Presidente



## THE GRAPEVINE

Published Quarterly: January, April, July, and October  
Submit Ads / Articles / Happenings / Questions to  
Newsletter Editor Wendy Corso-Ruud email: ruud3@aol.com



### In this Issue...

#### Page Contents

1	Cover Page - President's Message / Mensaje de la Presidente
2	Credential News / Meeting News / Members of Boards/Councils Caring Hands CPR Ad
3	Calendar / Membership News / FB
4	FFCCHA Leadership Training Nov 8
5	Talk of the Town / FFCCHA Fundraising / Latino News
6	FFCCHA 2024-2025 Annual Report Accomplishments / Achievements
7	Public Relations News / Mentor News Chapter Rep / Area Rep News
8	FFCCHA Credential Scholarship App
9	Chapter Events / NAFCC Save the Date / TEACH Ad
10	Executive Board List / Area Reps
11	Chapter Reps / Open Positions Available / Nov 8 Summit Hotel
12	FFCCHA Goes to Dallas - Recap
13	NAFCC Photos / Member Goings On
14	GEE WHIZ Ad
15	Legislation Liaison News / DOE Page
16	Call for FFCCHA Volunteers
17	Call for FFCCHA Conference Workshop Presenters
18	Call for FFCCHA Exhibitors / Ads / Donations
19	Save-the-Date 2026 Conference
20	Back / More NAFCC Photo FUN

### Credential Scholarship News

By Abbie Bill, Scholarship Coordinator

**A total of 10 (\$4,630) Scholarships  
were awarded July 1, 2025 - September 30, 2025**

**NAFCC Self Study:** Diana Calero, Sandy Castano, Brittney Patillo  
**18 Month Update:** Ortega Thomas, Gwen Wilson

**NAFCC Re-Accreditation:** Maria Fernandez, Mary Funderburk, Renee Jones, Erica Montoya, Wonza Smith

**New requirement for Self Study scholarships:** Family Child Care Educators in Self Study will be required to work with one of our Certified Mentors or staff. They will help you through the Self Study phase, so you will be successful.

**Funds are available NOW!**

**FFCCHA now pays the full fee of each credential scholarship!**

When applying for a scholarship, make sure you thoroughly read the scholarship form and send ALL requested documents, as they have changed.

**Applications are available NOW!  
in this issue of The Grapevine or  
online on our website!**

Questions? Contact me at 561-445-7333 or [aright933@aol.com](mailto:aright933@aol.com) or  
[CredentialChair@familychildcare.org](mailto:CredentialChair@familychildcare.org)



#### Members of FFCCHA who serve on Early Learning Coalitions

**Annette Eberhart** - ELC of Hillsborough  
**Nichola Griffiths Butts** - ELC of Palm Beach  
**Naomi Helligar** - ELC of Osceola County  
**Cecil Wilson** - ELC of Marion County

#### Members of FFCCHA who serve on other Boards / Councils

Tammy Tener, Kissha Ballard, Arleen Lambert - The  
FUTURE Project - The Children's Movement  
Angela Perla Almodovar - MDC Advisory Board, Board  
Member of: Early Childhood Initiative of America; Early  
Childhood Training Institution; Mariposas con Propósito  
Annette Eberhart - FICCIT Florida Interagency  
Coordinating Council for Infants & Toddlers  
Kissha Ballard - ERIKSON Institute - Pre-K in FCC  
Lynn Gibson - Pinellas County License Board FCC Rep  
Kathy Jones - Hillsborough County Board of County  
Commissioners Family Child Care Home Advisory Board  
Arleen Lambert - Miami Dade College Early Childhood  
Education Advisory Committee  
Karen Robinson - Palm Beach County Health  
Department Child Care Advisory Council  
and Palm Beach State College Advisory Council  
Patricia Williams - North Florida Chapter of FLAAYC  
Zipporah Morris Scott- Children's Services Council  
Resident Advisory Committee; Council of Professional  
Recognition CDA Subject Matter Expert

### August Meeting Training / Meeting

Saturday morning started off with a ZOOM!!  
Members experienced a wonderful training,  
"Beyond Behaviors: Inclusive Support for Chil-  
dren with Unique Abilities and Strengths." This  
was presented by Shannon Estrin, Behavior  
Health Coach, who shared an empowering workshop focused on  
supporting children with unique abilities and high-energy needs.

The FULL Board meeting was held on Saturday, August 16. fol-  
lowing the zoom training. Reports were presented.

Meeting was adjourned at 1pm.



### Caring Hands CPR Jax

CPR, BLS, First Aid, Bloodborne Pathogens, Baby Sitter Class

**Sheretta Joseph**

AHA & ASHI Instructor

904-449-7977

[caringhandsss@yahoo.com](mailto:caringhandsss@yahoo.com)

[caringhandssupports.com](http://caringhandssupports.com)

**AMERICAN SAFETY &  
HEALTH INSTITUTE**



**Events Calendar 2025-26**

October 2025 - July 2026

**\*Start planning now for FFCCHA June 2026 conference –  
Make your hotel reservations! Hotel LINK is available!**

**October**

- 16-19 FLAEYC conference, Omni Hotel, Orlando, FL  
 17 Hotel Deadline - Group Rate for Nov 8  
 FFCCHA Leadership Summit  
 24-26 EC Leadership Training, Location TBA

**November**

- 8 FFCCHA Leadership Summit & Full Board  
 Meeting, Kissimmee  
 17 Deadline - January FFCCHA newsletter  
 19-22 NAEYC Conference, Orlando, FL

**December**

**Apply NOW for FFCCHA Board Positions and Even  
 number Area Reps to start in July 2026: Chapter  
 Rep Coordinator, Fundraising, etc.**

**Applications are available at  
[www.familychildcare.org](http://www.familychildcare.org) on the "Forms"  
 page under Resources or contact:  
 Nomination Chair, Mayra Marquez.**

**E-mail: [MMlatinoliason@gmail.com](mailto:MMlatinoliason@gmail.com), (407)452-2967**

**January 2026**

- 13 Florida Legislative Session starts  
 25 Deadline - Conference Workshop Proposals  
 31 FFCCHA In-person Training - Location TBA

**February**

- TBA FFCCHA Virtual Training  
 17 Deadline - April FFCCHA Newsletter  
 22-27 Children's Week, Tallahassee

**March**

- TBA FFCCHA Virtual Training  
 13 Florida Legislative Session ends

**April**

- 25 FFCCHA Training and Full Board Meeting  
 Location TBA  
 30 Deadline - Conference Volunteer Scholarships

**May**

- 5 Deadline - Conference 2028 Photo Contest  
 8 National Child Care Provider Appreciation Day  
 17 Deadline - July FFCCHA Newsletter  
 24 Early Bird Deadline for conference registration

**June**

- 1 Deadline - Conference Hotel group rate  
 24-28 FFCCHA Conference, Kissimmee

**July**

- 8-10 One Goal Summer Conference, Tampa  
 16-18 NAFCC Conference, Chicago, IL

**MARK  
 YOUR CALENDAR!**

**Fall Membership News**

Kissha Ballard, Membership / Joselly Santos

Recognition of the Chapter that submits the most new members,  
 renewals, or advocate-members is given monthly.

**Congratulations to our Chapter  
 Membership Drive Winners!!**

**Multicultural FCCH Association of Orange Co. (Aug)  
 Heart to Heart Child Care Association (Sept)**

We hope you are enjoying the JointIt platform and finding it useful! We encourage you to take some time to log into your membership account and explore all of its features.



It is imperative that members continue to access their profile and update their information regularly. Please take a moment to review and update your profile, ensuring that your phone number, address, and date of birth are current and accurate. Keeping this information up-to-date helps us stay connected with you and provide the best possible service.

Since late March 2025, FFCCHA has been sending members information via emails using Constant Contact from our new JointIt platform. Please check your inbox for colorful emails from [info@familychildcare.org](mailto:info@familychildcare.org). If you are not finding them, check your spam folder to see if they went there. Also, let us know if you are not receiving them—your email may not be listed correctly in your profile.

Chapter leaders receive monthly reports based on member profiles. If you notice any discrepancies in the reports or membership information, email me at [operationmanager@familychildcare.org](mailto:operationmanager@familychildcare.org).

This month, we will be sending you an anonymous survey to help us evaluate our services and gather your valuable feedback. Your participation is greatly appreciated and will help us continue to serve you better.

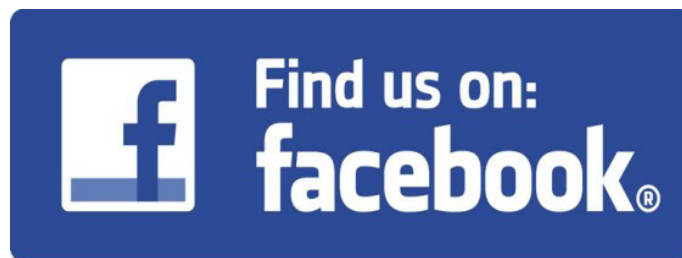
Thank you for your continued membership and support. We're grateful to have you as part of our community!  
 Joselly Santos, Operations Manager

And if you have any other membership questions, you can contact me at (407) 616-5082 or [membership@familychildcare.org](mailto:membership@familychildcare.org)  
 Kissha Ballard, FFCCHA Membership

**We are up to 1041 Followers  
 on our Facebook page!! WOOHOOO!!**

**[www.facebook.com/FFCCHA](http://www.facebook.com/FFCCHA)**

**Share and Like us NOW! :) Click on our link below:**





# FFCCHA Professional Development LEADERSHIP TRAINING Saturday, November 8, 2025 8:00 am to 5:00 pm



Embassy Suites Orlando - Lake Buena Vista South  
4955 Kyns Heath Rd, Kissimmee, FL 34746

[Hotel Link for Nov 8 FFCCHA Leadership Summit – Deadline to reserve hotel Oct 24](#)

Training Registration Fee: **\$140** (\$100 scholarships available)  
FFCCHA members **Pay only \$40** (for FL licensed or registered providers or co-providers)  
Questions? Email [training@familychildcare.org](mailto:training@familychildcare.org) or call 813-493-0828

## Online Payments are available!

<https://familychildcare.org/product-category/virtual-in-service-training/>

OR make check payable to **FFCCHA, Inc.**

Please submit this completed form with payment to **FFCCHA Scholarship - Abbie Bill**  
9207 Edgemont Lane  
Boca Raton, FL 33434

**Deadline: Form must be received by November 1, 2025.**  
**NOTE: Payments received after this date will increase to \$50.**

\_\_\_\_\_ <--- Please check here if applying for a training scholarship! Pay only \$40!

*Please Print:*

Name: \_\_\_\_\_

Address: \_\_\_\_\_

City: \_\_\_\_\_ Zip: \_\_\_\_\_ County: \_\_\_\_\_

Phone #: \_\_\_\_\_ Other Phone #: \_\_\_\_\_

E-mail Address: \_\_\_\_\_

Chapter that you are a member of \_\_\_\_\_

**IN ORDER TO RECEIVE A CERTIFICATE, YOU MUST **SUBMIT A REGISTRATION FORM**,  
BE PRESENT THE **ENTIRE** TRAINING SESSION, and **SUBMIT ONLINE EVALUATION** after training.  
PLEASE NOTE: Arrive as early as 7:45 am to sign in. Training starts promptly at 8:00 am!**

## Stronger Together: Empowering Teams for Lasting Impact

Presenter: Valorie Wilkerson

Lead your Business... Lead your Program.... Leading an Organization... Lead it with Unity!!

**Stronger Together: Empowering Teams for Lasting Impact** is a dynamic leadership session designed to help leaders, entrepreneurs and teams communicate effectively, build trust, and work toward a shared vision. Through hands-on strategies and reflection, participants will learn how to strengthen collaboration, resolve conflict, and inspire collective accountability. Walk away with practical tools and a renewed commitment to leading teams that thrive - together.

**Valorie Wilkerson** is an experienced educator, consultant, and leadership trainer with over 25years in early childhood education and organizational development.

**We will also cover Area Local Leader Development - Chapter Leader Development -  
Advocacy - Project Updates - Conference Updates**

*Note: If you need an accommodation because of a disability in order to participate in the child care training: contact Annet Eberhart at least 2 weeks prior to the training date at 813-493-0828 between 9 am-5 pm Monday - Friday. **The deadline is October 26, 2024. NO refunds after this deadline. If you do not attend this training, the fees will not be refunded or transferred to another person.***

## TALK OF THE TOWN

### AREA 31 - Miami - Miami/Dade County

## Gladys Reyes



Gladys has been working as a child educator for 27 years. She is married with two children and seven wonderful grandchildren. When she began her training in early childhood education, she realized the important role that educators play in the early development of the children in our care. Due to the responsibility inherent in this work and the positive impact we can have on children and their families by providing quality care, she is committed to ongoing professional development.

She started working as a child care provider after an unexpected event occurred with her second child, when he broke his leg in an accident and had to stay home for almost a year during his recovery. She lived in a new neighborhood and seeing that there were many children and the possibility of working from home, she decided to start a family child care business, based on the principle of supply and demand. She discovered how rewarding this work is.

Gladys believes that the key to a successful family child care program is providing children and their families with quality care, fostering mutual respect, ensuring parents feel their children are safe, offering nutritious home-cooked meals, and maintaining professionalism and discretion at all times. A family-like environment with established routines, clear expectations, and positive discipline helps children smoothly transition between home and school.

She is the president of Family Child Care Providers Association (FCCPA) for Miami-Dade County in Area #31. Her primary professional qualification is a Bachelor's degree in Business Administration, along with early childhood education credits from FIU and an advanced director credential from Nova University.

Her hobby is growing orchids; she love plants, as they are very relaxing for her. She is a member of NAFCC and the Rotary Club of Peru, two organizations that help children from low-income families.

Her goal is to inform parents and the community about the high-quality care she provides as a family child care provider. She is highly trained to support children and their families at all stages and areas of development, with the ultimate objective that the children who attend our child care home will grow into successful men and women in their future lives, possessing strong values, self-esteem, and self-confidence, and learning to respect themselves and others as valued individuals.

*Please submit a "Talk of the Town" article about someone special from Areas 1 - 7.*

*Submissions must be submitted by November 17, 2025 to the Newsletter Editor: Wendy Corso-Ruud at ruud3@aol.com Thank you!*

### Support FFCCHA

Danish Williams, Fundraising

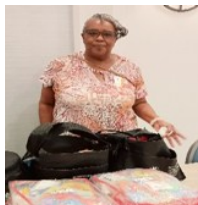


Hello to everyone! Hope you all are having a wonderful summer. As we head into Fall, I would like to thank everyone for the support, and all the many donations, especially from the Early Learning Coalitions around Florida. that were given at the FFCCHA Conference on June 25-29, 2025.

Everyone was excited about winning so many wonderful things, and the Green Table sales were amazing as well.

Stay safe and well, and enjoy each day. Hope to see you all on November 8, 2025, at our Leadership Summit. Remember to please bring more donations to support scholarships and the association.

For more info, call Danish at 305-495-5029 or email fundraiser@familychildcare.org



### Noticias Del Concilio Latino

#### Hola y gracias por visitarnos!

Estamos trabajando en la versión en español de nuestro sitio web para brindarle una mejor experiencia.

Mientras tanto, si necesita asistencia, no dude en escribir a: Joselly Santos jsantosffccha@gmail.com

Agradecemos mucho su paciencia y comprensión.

Como siempre, por favor avíseme si hay alguna pregunta o si hay alguna forma en que pueda ayudarlo.



### Survey for input for FFCCHA's Website

FFCCHA plans to launch a new website design in December 2025!

We have a great plan but we also value input from our members! Please share your thoughts and ideas with us! Click on the link:

[FFCCHA Website Survey](#)



## FFCCHA 2024-2025 ANNUAL REPORT

7/1/24 - 6/30/25 Accomplishments / Achievements

Tammy Tener, Executive Director



### July 1 – September 30, 2024

- Members attend NAFCC conference in St. Louis (July) 20 scholarships
- Full Board **virtual meeting & training** (Aug 3) 23 scholarships for training

### October 1 – December 31, 2024

- Hosted NAFCC Observer Training at FLAEYC conference (Oct)
- Annual in-person **Leadership Summit and Full Board meeting**, Kissimmee (Nov 9), 32 scholarships

### January 1 – March 31, 2025

- Executive Committee begins 6 months training in January with Better Futures
- Member virtual Training (Jan 23) 18 scholarships and (Mar 12) 21 scholarships
- **Full Board** virtual meeting and training (Feb 1) 23 scholarships
- In-person Mentor training specific to accreditation (Feb 8) 20 scholarships
- Launched new **Join It** platform for Membership (Feb-Mar)

### April 1 - June 30, 2025

- 12 Members & Executive Director attend in-person **Children's Week**, Non-profit One Voice Sponsor (Apr)
- Full Board meeting/In-person training, Orlando (April 26) 42 scholarships
- Hosted in-person state **conference "Enhancing Our Minds in...2025"** in Clearwater, **94 scholarships, 260 attend!**
- **Awarded a yearly total of 73 scholarships awarded to educators** towards NAFCC Accreditation, Observer, QAT
- **Awarded yearly total of 147 registration scholarships** for 6 statewide (4 virtual & 2 in-person) **in-service training**

## And FFCCHA represents YOU and YOUR profession by

**Representing Family Child Care on LEGISLATIVE Issues – April** visit to Legislators in Tallahassee

**Representing Family Child Care at STATE Conferences** - Executive Director & members attend in-person One Goal Summer conference, Tampa (July) and ED & members attend **FLAEYC** Leadership and conference (Oct), Executive Director and President (Arleen Lambert) attend FL Chamber conference in Daytona (May)

**Representing Family Child Care at NATIONAL Conferences** – ED, Board and members attend in-person National Association for Family Child Care (NAFCC) Conference July 2024 in St. Louis

## "At the Table" Representing Family Child Care at STATE MEETINGS

- Legislative Liaison (Tasheba Berry) on Children's Forum's Advocacy Fellowship - virtual & in-person (July -Apr)
- Executive Director, President (Arleen Lambert) Treasurer (Kissha Ballard) met in-person & virtually (Sept 2024-June 2025) on **THE FUTURE PROJECT** led by *The Children's Movement of Florida*
- Legislative Liaison (Tasheba Berry) had a 3-month internship with *The Children's Movement of Florida*
- Executive Director participates on weekly **Early Learning Consortium** zoom calls as needed (Consortium consists of Children's Movement, Children's Forum, Children's Trust, FL Alliance of Children's Services Councils & Trusts, United Way Florida, AELC, Head Start, FLAEYC [and FFCCHA](#).)
- Executive Director on the **Informal Pathway Advisory Committee**, in-person & virtual meetings (July, Jan, Mar)
- Professional Development (Annette Eberhart) attends the ECE College Network Meeting, Tallahassee (April)

## "At the Table" Representing Family Child Care at NATIONAL MEETINGS

- Christina Brown and her FCC home featured in NAFCC documentary, *"We Are Family Child Care – A Story of Strength, Community, and Legacy"* (released July 2024)
- La Tonya Richardson on panel on NAFCC webinar *"Family Child Care at the Forefront: Discover How to Take Action and Elevate Your Voice on the National Stage"* (May 7)
- Board Member, Annette Eberhart, serves as chair on **NAFCC Accreditation Council** (monthly)
- NAFCC Region Reps in FL met virtually with NAFCC all year (NW & NE: Eva Anderson, Central: Mayra Marquez, Suncoast & SE Cynthia Chipp, South: Arleen Lambert)

**Public Relations News**

PR Materials

Having a meeting, workshop, or training session in your area coming up soon?

We now have large and small display boards as well as brochures and other professional resources. FFCCHA display Boards are in Spanish and English.

You can use any of our PR materials for virtual meetings and presentations with your ELC, Food Program, and your own Chapter Association meetings.

No time to wait?? You can print directly from our FFCCHA website under the Publications tab <https://familychildcare.org/resources/publications/>

AND... don't forget to take advantage of advertising your business in our quarterly Grapevine newsletter!

For more info,  
contact FFCCHA  
[info@familychildcare.org](mailto:info@familychildcare.org)

**MENTOR News - Fall 2025**

Abbie Bill, MENTOR Program Chair

**Thanks to Wanda Williams-Roberts and Valeria Cummings** who have turned in their mentoring paperwork and are now Certified Mentor 1 ... great job!!

All family child educators: If you would like help from a mentor or have questions or concerns about accreditation, please contact me. Mentors are trained to help in many other areas, not just accreditation. Areas include setting up your indoor/outdoor learning environment, contracts and policies, marketing, obtaining your CDA, handling difficult situations, etc.



FFCCHA Certified Educator Mentors - please make sure you are sending me any updates on your credentials and in service hours needed for each year.

If you have any questions on what is needed, contact me.

Abbie Bill 561-445-7333 [aright933@aol.com](mailto:aright933@aol.com)

**Chapter Rep News**

Angela-Perla Almodovar, Chapter Rep Coordinator

**Congratulations!****Karen Robinson**

Chapter Rep of the Quarter  
from United Professional CCP of South Florida

**Chapter Representative Meetings and Trainings - Attended**

These are the meetings and Trainings  
Chapter Reps attended:

Marion County FFCCP Assoc - Marjorie Wheeler attended the Sparr Community Meeting - July/August 2025  
FCC Assoc. of Jacksonville - Myrna Wright attended DELDN Conference September 2025; NAFCC Conference; FFCCHA Conference.  
United Professional CCP of South Florida - Karen Robinson attended "Beyond Behavior" FFCCHA 8/2025; FFCCHA Conference.  
APCID - Daysi Mordan - DCF Meeting - 8/19/2025

**Chapter Coordinator Meetings and Trainings -**

These are the meetings I attended:

PBCFCCA Monthly - 7/19/2025; FFCCHA EB - 7/23/2025; Quality FHCC Provider Association Hillsborough County - 8/11/2025; Bainum Foundation - 8/15/2025; FFCCHA Quarterly - 8/16/2025; FFCCHA EB Emergency - 8/18/2025; FFCCHA EB Special Meeting - 8/26/2025

Fontana Accountant Firm/FFCCHA EB - 8/29/2025; FFCCHA Audit Report - 9/5/2025; APCID Informative - 9/12/2025

Your Chapter Rep Coordinator is **HARD AT WORK!!** Please contact Perla at (386) 846-9567 or email [chaptercoordinator@familychildcare.org](mailto:chaptercoordinator@familychildcare.org)

**Area Rep News**

Mary Morris, Area Rep Coordinator

**Congratulations!****Matline Ford**

Area Rep of the Quarter  
from Area 5 - Big Bend Region

Matline, thank you for your hard work, dedication, and continued commitment to FCC. Hats off to you!

Big thanks to each of you for the warm welcome as your new Area Rep Coordinator. Your support truly means so much to me!

Appreciation goes out to all Area Reps for submitting your reports to me on time. Your professionalism and dedication to FFCCHA in your areas, does not go unnoticed, as does your commitment and the excellence you continue to display!



Area Reps, keep up the great work as you build positive relationships within your local communities and represent FFCCHA!

We are seeking Area Reps in several areas. Help spread the word about this amazing opportunity to others who are filled with knowledge, experience, and passion, that each of YOU embody.

**Join the Team!** If you or someone you know is interested, feel free to contact Mary at 561-386-3567 or email [areacoordinator@familychildcare.org](mailto:areacoordinator@familychildcare.org)

**Thank you for all you do to make FCCCHA shine!**



## FFCCHA Credential Scholarship Application

### July 1, 2025 - June 30, 2026



**Requirements:** Must be a Florida Licensed Family Child Care Home, FFCCHA Educator or Chapter Member, and NAFCC Member (included with FFCCHA Premium Membership).

**Applying for:** ☐ \$200 ☐ \$385 ☐ \$615 ☐ \$\_\_\_\_\_

- |  |   |
|--|---|
| <input type="checkbox"/> NAFCC Accreditation Quality Ambassador Certified Trainer                                    | <input type="checkbox"/> NAFCC Re-Accreditation: Application  |
| <input type="checkbox"/> NAFCC Accreditation Observer Training   | <input type="checkbox"/> NAFCC Accreditation: 18-month Update |
| <input type="checkbox"/> NAFCC New Accreditation: Self Study <i>(includes Mentoring sessions assigned by FFCCHA)</i> |   |
| <input type="checkbox"/> NAFCC New Accreditation: Application  |   |

*Note: \$950/person/year is the maximum awarded in time period July 1, 2025 – June 30, 2026.*

**PLEASE PRINT:**

Name: \_\_\_\_\_ Email: \_\_\_\_\_

Name on Family Child Care License: \_\_\_\_\_

Mailing Address: \_\_\_\_\_

City: \_\_\_\_\_ Zip: \_\_\_\_\_ County: \_\_\_\_\_

Phone: \_\_\_\_\_ Fax: \_\_\_\_\_ Cell: \_\_\_\_\_

**Check all that apply:** ☐ Licensed ☐ Large Licensed ☐ VPK ☐ CDA ☐ NAFCC Accredited since \_\_\_\_\_

Local FFCCHA Chapter: \_\_\_\_\_ Area # \_\_\_\_\_

Name of Chapter President: \_\_\_\_\_

How long have you been a member of your local chapter? \_\_\_\_\_

List current leadership roles or participation in your chapter: \_\_\_\_\_

List current leadership roles or participation in FFCCHA: \_\_\_\_\_

How long have you been a full time family child care provider? \_\_\_\_\_

List other child care related experience: \_\_\_\_\_

What are your future plans in family child care? \_\_\_\_\_

Briefly explain how receiving this scholarship will benefit you, the children, your parent clients, and/or other providers: \_\_\_\_\_

Do you agree to sign a contract to return the awarded money, if you fail to meet the scholarship purpose within an agreed upon deadline? ☐ Yes ☐ No

Please **submit application via email** (put your name in subject line) to: [credentialchair@familychildcare.org](mailto:credentialchair@familychildcare.org)

**Include a copy of your current NAFCC Membership Card OR receipt of purchase and copy of your Child Care Home License and 1 letter of recommendation (dated within past 6 mos.) from any of the following: Child Care Agency, Early Learning Coalition, local FFCCHA Chapter, FFCCHA Certified Mentor, parent client from your FCC home, Food Program Sponsor, Training Instructor, Licensing, Community or State College.**

**ALL correspondence is by e-mail, so make sure your email is valid and check it often after applying.**

**Questions? Please call 561-445-7333, 407-234-3473, or e-mail [credentialchair@familychildcare.org](mailto:credentialchair@familychildcare.org)**

**Office verification:**

**Regulation** \_\_\_\_\_ **Chapter** \_\_\_\_\_ **Member since** \_\_\_\_\_ **FFCCHA** \_\_\_\_\_ **NAFCC** \_\_\_\_\_ **Application Rev 7-2025**



## CHAPTER EVENTS!

**Palm Beach County Family Child Care Association: Provider Appreciation Gala - Theme:**



WANT TO GO  
BACK TO SCHOOL?  
WE CAN HELP!



Visit us online at [www.TEACH-FL.com](http://www.TEACH-FL.com)  
or give us a call at 1-877-FL-TEACH

## MEMBERS at EVENTS!

Palm Beach Family Child Care Association

**MORE for MOMS Brunch** brought parents, providers, and the Early Learning Coalition of Palm Beach County, together to share the good, the challenges, and the real ways the State can improve early learning programs. The mom brunch was hosted by Representative Jevonte Edmonds and ELC Palm Beach County.

Together, we  
are building  
solutions for  
our children's  
futures.



## Florida Family Child Care Home Association, Inc. - October 2025

Executive Committee of Board = 9	Name	City	Zip	Phone	Email
<b>President</b>	Gertrude Freeman-Ford	Cocoa	32926	321-890-8366	president@familychildcare.org
<b>Vice President</b>	Jennifer Richards	Daytona Beach	32114	386-846-9567	vicepresident@familychildcare.org
<b>Secretary</b>	Wendy Corso-Ruud	Boca Raton	33431	561-715-1361	secretary@familychildcare.org
<b>Treasurer</b>	Renie Roach	St Augustine	32092	904-392-5366	treasurer@familychildcare.org
<b>Membership</b>	Kissha Ballard	Orlando	32811	407-616-5082	membership@familychildcare.org
<b>Area Rep Coordinator</b>	Mary Morris	W Palm Beach	33409	561-832-0472	areacoordinator@familychildcare.org
<b>Chapter Coordinator</b>	Angela "Perla" Almodovar	Doral	33178	305-321-6735	chaptercoordinator@familychildcare.org
<b>Latino Liaison</b>	Open - Apply Now!				latinolais@familychildcare.org
<b>Professional Development</b>	Annette Eberhart	Tampa	33612	813-493-0828	training@familychildcare.org
<b>Fundraising</b>	Danish Williams	Miami	33147	305-495-5029	fundraiser@familychildcare.org

Interested in serving on the Executive Committee? Contact [nominations@familychildcare.org](mailto:nominations@familychildcare.org) OR 407-452-2967

Area #	Counties	11 Area Representatives - Full Board			
1	Escambia	Andrea Grace	Pensacola	32506	850-453-6652 <a href="mailto:andreagrace4215@att.net">andreagrace4215@att.net</a>
5	Liberty, Gadsden, Leon, Taylor, Wakulla, Jefferson, Madison	Matline Ford	Tallahassee	32305	850-877-3885 <a href="mailto:matlinef@aol.com">matlinef@aol.com</a>
7	Duval	Patricia Williams	Jacksonville	32209	904-403-8948 <a href="mailto:Pdt62@comcast.net">Pdt62@comcast.net</a>
10	Alachua	Lula Owens			904-779-9988 <a href="mailto:Lulafrank@bellsouth.net">Lulafrank@bellsouth.net</a>
13	Flagler, Volusia	Cynthia Durr	Daytona Beach	32114	386-258-6603 <a href="mailto:cbrownsugarmd@aol.com">cbrownsugarmd@aol.com</a>
16	Brevard	Joyce Burks	Cocoa	32922	321-292-2159 <a href="mailto:JoyceBurksChildCare@gmail.com">JoyceBurksChildCare@gmail.com</a>
17	Orange	Sonji Mitchell	Orlando	32808	407-936-8358 <a href="mailto:sonjip@hotmail.com">sonjip@hotmail.com</a>
18	Osceola	Fariha Zuberi	Orlando	32837	407-361-0130 <a href="mailto:montessori.home@yahoo.com">montessori.home@yahoo.com</a>
21	Hillsborough	Renee Graham	Tampa	33619	813-621-5369 <a href="mailto:rgraham89@verizon.net">rgraham89@verizon.net</a>
28	Lee, Hendry, Glades, Collier	Valeria Cummings	Ft Myers	33916	239-822-3235 <a href="mailto:wifey02@hotmail.com">wifey02@hotmail.com</a>
29	Palm Beach	Lisa Dupree	Riviera Beach	33404	561-574-0154 <a href="mailto:ladyd0316@yahoo.com">ladyd0316@yahoo.com</a>

Interested in serving as an Area Representative for your county? Contact [arearepcoordinator@familychildcare.org](mailto:arearepcoordinator@familychildcare.org) OR 305-321-6735

16 Chapter Representatives - Full Board					
Area	CHAPTER NAME	Meeting City/County	Chapter Rep.	Phone	E-Mail
5	North Florida FCC Association	Big Bend Area	Charlene Thornton	850-980-2824	<a href="mailto:LSLCKids@yahoo.com">LSLCKids@yahoo.com</a>
7	Family Child Care Assoc. of Jacksonville	Duval County	Myrna Wright	904-477-2965	<a href="mailto:Jbear_226@yahoo.com">Jbear_226@yahoo.com</a>
8,9,13	Putnam County FCC Provider Association	Rotates Cities	Karan Hiester	386-957-4482	<a href="mailto:educate71@gmail.com">educate71@gmail.com</a>
12	Marion County FCCH Association	Marion County	Marjorie Wheeler	352-299-7203	<a href="mailto:marjoriejanae19@gmail.com">marjoriejanae19@gmail.com</a>
15,17,18	Central Florida Association for FCC	Osceola-Orange	Alethia Dittren	407-870-1569	<a href="mailto:dittren01@netzero.com">dittren01@netzero.com</a>
16	Brevard Sunshine FCH Association	Brevard County	Open		
17	Multicultural FCCHA of Orange Co	Orlando	Stephanie Minus	407-373-3762	<a href="mailto:elementzofbusiness@gmail.com">elementzofbusiness@gmail.com</a>
21	HCCPA of NE Hillsborough County	Hillsborough County	Cynthia Brown	813-766-4682	<a href="mailto:robinsontainingconsultant@yahoo.com">robinsontainingconsultant@yahoo.com</a>
21	Quality FHCC Provider Association	Hillsborough County	Robin Dean	813-205-4432	<a href="mailto:nanaslearningpost@gmail.com">nanaslearningpost@gmail.com</a>
22	Heart to Heart Child Care Assoc	Pinellas County	Karen Holloway	727-442-2013	<a href="mailto:hollowayk24@yahoo.com">hollowayk24@yahoo.com</a>
23	HCC Providers Assoc. of Manatee County	Manatee County	Tia Jackson	941-504-5017	<a href="mailto:tjackson34@aol.com">tjackson34@aol.com</a>
29	Palm Beach County FCC Assoc	Palm Beach County	Nichola Griffiths-Butts	561-506-4739	<a href="mailto:nicholagriffiths@yahoo.com">nicholagriffiths@yahoo.com</a>
29	United Professional CCP of South Florida	Palm Beach County	Karen Robinson	561-574-8512	<a href="mailto:davis7769@yahoo.com">davis7769@yahoo.com</a>
30,31	APCID of Hialeah	Hialeah	Daysi Mordan	786-797-8684	<a href="mailto:Daysimordan81x@gmail.com">Daysimordan81x@gmail.com</a>
31	South Florida Home CC Association	Dade County	Kelly Patterson	305-986-8826	<a href="mailto:pattersonKelly91@gmail.com">pattersonKelly91@gmail.com</a>
31	FCCPA of Miami-Dade County	Miami/Dade County	Gladys Reyes	786-704-2012	<a href="mailto:Lalyreyes252@yahoo.com">Lalyreyes252@yahoo.com</a>

Interested in joining a Chapter near you? <https://familychildcare.org/join-us>

Support Group - Non Board					
10	Alachua FCCH Educators	Gainesville	Deborah Danzy	352-277-9265	<a href="mailto:ddanzy@myyahoo.com">ddanzy@myyahoo.com</a>



## Florida Family Child Care Home Association, Inc. - October 2025

## COMMITTEE CHAIRS (NON-BOARD POSITIONS)

<b>Advisory</b>	Gwen Wilson	352-351-5370	gwenlo50@hotmail.com	<b>Newsletter Editor</b>	Wendy Corso-Ruud	561-715-1361	ruud3@aol.com
<b>Awards</b>	Renie Roach	904-392-5366	renieroach@yahoo.com	<b>Nomination</b>	Mayra Marquez		nominations@familychildcare.org
<b>Chaplain</b>	Cynthia Durr	386-258-6603	cbrownsugarmd@aol.com	<b>Social Media</b>	Karan Hiester	386-957-4482	educate71@gmail.com
<b>Hospitality</b>	Sharon Singleton	407-404-3038	singsd63@gmail.com	<b>Credential Scholarship</b>	Abbie Bill	561-445-7333	credentialchair@familychildcare.org
<b>M.E.N.T.O.R.</b>	Abbie Bill	561-445-7333	FLMentorpgm@aol.com				

## STAFF (NON-BOARD POSITIONS)

<b>Executive Director</b>	Tammy Tener	407-234-3473	info@familychildcare.org
<b>Operations Manager</b>	Joselly Santos		operationmanager@familychildcare.org
<b>Finance Manager</b>	Sande Harper	727-345-0299	sharper3601@aol.com
<b>Hub Coordinator for Broward</b>	Tasheba Berry	954-464-3134	info@tashbaberry.com
<b>CONFERENCE COORDINATOR:</b>		<b>KARAN HIESTER</b>	<b>386-957-4482</b> <a href="mailto:conference@familychildcare.org">conference@familychildcare.org</a>

FFCCHA: 9207 Edgemont Lane, Boca Raton, FL 33434

Phone: 954-581-1192

E-mail: [info@familychildcare.org](mailto:info@familychildcare.org)*Passionate about your profession as a family child care provider? Interested in promoting our mission?***Apply NOW for Current Vacant Positions for Area Reps:**

Area Representatives: 2, 3, 4, 6, 11, 12, 19, 20, 22, 23, 24, 25, 26, 27, 30, 31

**Apply** for open positions and all odd number Areas for a 2-year term.Submit Area Rep applications to: [areacoordinator@familychildcare.org](mailto:areacoordinator@familychildcare.org)**Apply NOW for Current Vacant Positions for Chairs:****Committee Chairs** (non-board positions): Bylaws, Finance, Chapter Dev, Fundraiser, Historian, Parliamentarian, Latino Development, Member Development, and Translation**Apply NOW for Vacant Executive Officer Positions to start immediately:**

Latino Liaison

**Applications are available** at [www.familychildcare.org](http://www.familychildcare.org) on the "Forms" page under Resources or contact**Nomination Chair, Mayra Marquez.** Applications can be submitted via e-mail, mail, fax or hand delivery. Questions? E-mail: [nominations@familychildcare.org](mailto:nominations@familychildcare.org) OR call: 407-452-2967**2026 FFCCHA Conference Hotel  
Link is LIVE now!**

Embassy Suites by Hilton Orlando Lake Buena Vista South  
Remember, rooms sell out quickly, so to avoid missing out,  
please click on this link:

**Click here: [Book Group Rate for FFCCHA June 2026 Conference](https://book.passkey.com/event/51073002/owner/10810031/home?utm_campaign=297896691)****OR copy and paste:**[https://book.passkey.com/event/51073002/owner/10810031/home?utm\\_campaign=297896691](https://book.passkey.com/event/51073002/owner/10810031/home?utm_campaign=297896691)



## FFCCHA Goes to NAFCC in Dallas 2025! Make Sure to Join us Next Year in Chicago!!



Florida was well represented at the 35th Annual NAFCC conference **"Bigger, Better, Bolder - A New Legacy for FCC"** on July 31-Aug 2, 2025 at the Hilton Anatole in Dallas, TX. We had 32 provider/co-provider members and 8 staff from other organizations attend for a grand total of 40. Thanks to several agencies and the **Bainum Family Foundation** for their support to help providers to attend.

Several FFCCHA members arrived early to attend Wednesday Pre-Conference Leadership Trainings. **Annette Eberhart** was a pre-conference Co-presenter for the NAFCC Observer Training (2-days W-TH). On Wednesday evening, some members attended the President's Reception/Dinner (invite only) held at a nearby barbeque restaurant for a photo opportunity with "Maria" from Sesame Street.

We also had 3 of our NAFCC Reps for Florida attend: New Rep, **LaTonya Richardson**, Region A (NE and NW FL), **Cynthia Chipp**, Region C (Suncoast & SE FL) and **Arleen Lambert**, Region D (South FL) who attended the NAFCC Rep meeting.

Thursday morning began with the Opening Keynote from **Sonia Manzano**, known as "Maria" on Sesame Street and Best-Selling Author followed by 71 workshops + 9 in Spanish throughout the day to select from. On Thursday evening, the Leader Shaping Leaders (Cohort 4) graduation was held with 2 from Florida: **Mary Morris** (Mentor), **Vivene Smith** (Mentee).

Friday was another day of 72 + 8 Spanish workshops to choose from and on Friday evening was the NAFCC Reception & Accreditation Toast to Quality "Shine Bright Like a Diamond." 14 FFCCHA members that are FL Gold Seal Providers were recognized for being NAFCC accredited. They were, from Alachua County: **Tamika Rutledge**; from Duval County: **Renee Jones, Sheretta Joseph, Chauntrell Knox, LaTonya Richardson, Patricia Williams and Myrna Wright**; from Hillsborough County: **Cynthia Chipp, Annette Eberhart**; Palm Beach County: **Nichola Griffiths-Butts, Arneatha Johnson, Mary Morris, Vivene Smith, Monica Turner. Annette Eberhart** was also recognized as NAFCC Accreditation Council Chair. The Toast was followed by DJ and Dancing celebration.

Saturday's Opening Session had a Welcome by **Jerletha McDonald** and then a Plenary Panel of 5 from the Global Learning Cohort with **Arleen Lambert** (FFCCHA Immediate Past President) as a panel member. Then another day of 66 + 13 Spanish workshops to choose from with an all-conference luncheon with awards.

Another 13 FFCCHA members attending the NAFCC conference from Florida were: **Dr. Angela-Perla Almodovar, Wendy Corso-Ruud, Gertrude Freeman Ford, Elizabeth Ibarra, Anna Kinchens, Zipporah Morris Scott, Linabel Pennyfeather, Jennifer Richards, Latarsha Richardson, Tammy Tener, Jessica Thurmond, Shandra Warner and Nicola Wheeler**. Everyone had a wonderful time and it was great to learn from all of the keynotes and workshop session presenters and to meet all the Exhibitors, Sponsors, NAFCC Staff, Board members, old and new acquaintances, providers and attendees from all over the nation!

Save the Date for next year's NAFCC conference in Chicago, Illinois, on July 16-18, 2026, with the theme **"Building Bridges, Raising Voices, Shaping Futures."** And the following year will be in Jacksonville, Florida, on July 15-17, 2027!!



**"What we cannot imagine  
cannot come into being."**

- bell hooks

**SELF-CARE  
IS A LUXURY.**





## FFCCHA Goes to Dallas for NAFCC! PHOTO FUN



## MEMBERS Goings-ons!



### Danish Williams FDCH Summer Activities

Miami-Dade County, Area 31

The children and I had a awesome summer! Our activities were water play and sand play every day. We used various materials such as cookie cutters, knives, rakes, measuring cups, and spoons, as well as all sticks and rocks they searched for and found outside.

These littlest learners were excited to have outdoor fun, and one was even taking everybody else's items... encouraging a quick lesson in sharing and caring, as well as cleaning up!





# Approved for School Readiness



## Providers that use Gee Whiz say:

"I love Gee Whiz because..."

- ✓ *I can be more creative & engage with children because I have a strong foundation upon which to build + Gee Whiz is aligned/approved, too!*
- ✓ *My family materials are ready to go ... I do not need to create them*
- ✓ *I have activities for ALL my ages at my fingertips every day*

**Get your first month of Gee Whiz for just \$5.00!\***

**Use discount code FL2025 when ordering Monthly**

## So much for so little.

**SAVE TIME!** 20 days of lesson plans for your mixed-age group every month

Printable Teaching Tools - just print and go

Family Involvement components at your fingertips (English & Spanish)

Tools to make individualization easier

And so much more!

**Want to learn more and see sample Gee Whiz curriculum materials?**

**Go to our website and look under the "Curriculum" tab.**

**Scroll down to "Gee Whiz in a Nutshell"**



\* After your first month at \$5.00, you will be charged at our regular monthly rate of \$24.95 until you cancel...which you may do at any time.

**Learn more & subscribe at [www.geewhizeducation.com](http://www.geewhizeducation.com)**



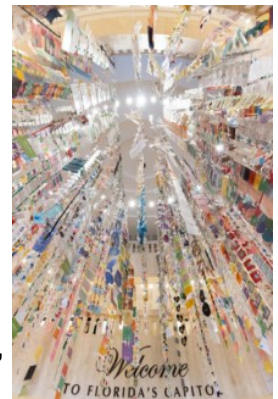


## CHILDREN'S WEEK

Children's Week Florida is the largest annual event held in the state that celebrates and honors its commitment to children, teens, and advocates, and will be held February 22-27, 2026, in Tallahassee, FL! Save the dates for an incredible week of educational events, networking activities, and advocacy opportunities, that you will not want to miss.

The theme this year is **Building Blocks for Every Child** which shows a strong commitment to building long-reaching foundations for ALL of Florida's children. Make plans now to come and join us in Tally to build the future for our youngest, our teens, our advocates... our future.

Stay tuned for event details, including how to get involved during Children's Week including the Hanging of the Hands and Celebration. [Apply to attend 2026 Children's Week Link](#) for scholarship to attend! Please share this with anyone you know is a strong advocate for children, and spread the word about Children's Week which is super early this year, during this year-long initiative. For more information go to: <https://childrensweek.org/>



For more information on 'The Hands' and instructions, click on the photo above or click on this link: <https://childrensweek.org/events/celebration-of-the-hands/>



Each month, the **Division of Early Learning** shares a most informational Newsletter called "Parents' Pages"

Read up on what is going on!

For more information, click on this link:

<https://www.fldoe.org/file/20625/OctoberPP25.pdf>



## Parents' Pages

The Official Newsletter of the Division of Early Learning

OCTOBER 2025  
VOLUME 11  
ISSUE 10



**You Can Still Register!**

It's not too late to register for VPK. To be eligible for VPK, children must live in Florida and be 4 years old on or before September 1 of the current school year.

Families can register their eligible child on the [Early Learning Family Portal](#). Then check out the [Prekindergarten Family Guide](#) for tips and resources for a successful program year.

Registration for the 2026-2027 program year will begin January 1, 2026.



## Volunteer Application for Scholarships for 2026 Conference Registrations "Enhancing Our Minds...In 2026"

June 24-28, 2026

Embassy Suites by Hilton Orlando Lake Buena Vista South  
4955 Kyngs Heath Rd, Orlando, FL 34746



*Approved applicants applying for a scholarship will be **required** to volunteer 3 hours.*

### Volunteer Qualifications/Requirements:

1. Be a current **provider member of FFCCHA** (keep valid thru June 30, 2026) operating as a **FL registered or licensed provider** or be a current **Co-provider member of FFCCHA** (keep valid thru June 30, 2026)
2. Complete and **submit this scholarship form** along with the **\$70.00 fee**. **\*\*Scholarship Rates increase May 1, 2026 (\$90).\*\***
3. **Attend** a virtual OR in-person volunteer **orientation before going to conference**. Details will be emailed after application has been received.
4. **Attend** the entire conference day(s) that you applied for and turn in a **completed conference evaluation**.
5. **Wear** an Orange Apron (supplied by FFCCHA) over your attire when serving your 3 volunteer hours. (no tank tops or short shorts)
6. **Sign-in** at conference and **fulfill your 3-hour volunteer duties as assigned**, return hostess paper, and **sign-out**.
7. Turn in a **completed conference evaluation**.

**PAYMENT OPTIONS:** Online credit card payment <https://familychildcare.org/product-category/ffccha-conference/>  
check or money order payable to **FFCCHA – NO Refunds**. Returned checks assessed a \$47 fee  
**Mail to: FFCCHA Volunteers, Sheretta Joseph, 1189 West 29 St, Jacksonville, FL 32209**

**\*Early Bird Deadline: April 30, 2026** Qualifying applications will be dated as received and **selected on a first come, first serve basis** until all scholarships have been awarded. All providers will be notified when received as to their acceptance status.

**All applications received by the deadline** will be entered in a drawing for a prize. **\*\*Scholarship Rates increase May 1, 2026 (\$90).\*\***

Select only ONE Type of Conference Registration you are applying for (check ONE only):

☐ **Friday-Saturday-Sunday** ☐ **Saturday-Sunday** ☐ **Saturday Special (8am-5pm only)** ☐ **Friday only (8am-5pm)**

Print with black or blue ink ONLY

Name: \_\_\_\_\_ Primary Language: \_\_\_\_\_

Signature: \_\_\_\_\_ Secondary Language: \_\_\_\_\_

Address: \_\_\_\_\_ County: \_\_\_\_\_

City: \_\_\_\_\_ Zip: \_\_\_\_\_ State: \_\_\_\_\_

Local Chapter: \_\_\_\_\_ Cell: \_\_\_\_\_

Name of FCC Home: \_\_\_\_\_ Phone: \_\_\_\_\_

E-Mail: \_\_\_\_\_ Is this your first conference? \_\_\_\_\_

Check all that apply: ☐ Registered ☐ Licensed ☐ Large Licensed ☐ VPK ☐ NAFCC Accredited ☐ NAFCC Observer  
☐ EHS (Early Head Start) ☐ Director Credential ☐ CDA ☐ College Degree, Type \_\_\_\_\_

Please rate your first 1<sup>st</sup> and 2<sup>nd</sup> preferences in volunteering (however, no guarantees)

\_\_\_\_\_ English workshop hostess \_\_\_\_\_ Fundraising Table \_\_\_\_\_ Set-up Thur 2-5p \_\_\_\_\_ Provider Celebration Sat 7-10pm  
\_\_\_\_\_ Spanish workshop hostess \_\_\_\_\_ Registration Table \_\_\_\_\_ Clean-up Sat 5pm \_\_\_\_\_ Other \_\_\_\_\_

How will receiving a scholarship to this conference benefit your child care? Only write on the lines below:

### PLEASE READ THE FOLLOWING STATEMENT

\* I understand that if I do not attend the type of registration applied for above or do not fulfill my three hours as a volunteer, my scholarship will be voided, and I will be responsible for the full cost of my registration.

**Questions? Contact Karan Hiester at (386) 689-3046 or via e-mail: [registration@familychildcare.org](mailto:registration@familychildcare.org)**

**Other contacts: [conference@familychildcare.org](mailto:conference@familychildcare.org) or [info@familychildcare.org](mailto:info@familychildcare.org)**

**Conference scholarships go quickly. So, don't be left out! Send completed form today!**

*If you need an accommodation because of a disability in order to participate in the childcare training process; contact, Karan Hiester, Conference Assistant at least two weeks prior to the first training date at 386-689-3046 between 8:00 am and 6:00 pm. Calls can be received Monday - Friday.*

Office use only:

Online/Cash/Ck# \_\_\_\_\_ Received date \_\_\_\_\_ Receipt# \_\_\_\_\_ Verified membership/expiration date: \_\_\_\_\_



## Call for Workshop Presenters

Florida Family Child Care Home Association, Inc  
**"Enhancing Our Minds...In 2026"**  
 34<sup>th</sup> Annual Conference, June 24-28, 2026

Embassy Suites by Hilton Orlando Lake Buena Vista South  
 4955 Kyngs Heath Rd, Orlando, FL 34746



Workshop Proposal Applications will **ONLY be accepted via email submissions in .doc or .docx** format or files that are typed in the computer (not handwritten and not scanned).

**Deadline: January 30, 2026**

All **workshop sessions** will be **75 minutes** (1.25 hours) with 30 minute breaks in between each workshop. 15 minutes right before and after workshop is allowed for set up and break down.

**All set up, handout copies, and visual aid expenses are the responsibility of the Presenter.**

Accepted workshops entitle **ONLY** the **PRIMARY PRESENTER** to a **free** conference **registration**.

**ALL** co-presenters will need to register and pay the registration fee. All presenters are responsible for **submitting a conference registration form by the deadline** and making their own travel and hotel reservations and any other expenses incurred. Hotel rooms go quickly so make your reservations **AS SOON AS POSSIBLE**.

**Submissions must include ALL of the following information:**

☐ English Track      ☐ Spanish Track

**Short Title (2-3 words):** \_\_\_\_\_ for use on the "At-a-Glance page" in program.

In order to provide a **variety of workshops**, please indicate which **category your workshop** relates to:

☐ Curriculum    ☐ Health, Safety or Nutrition    ☐ Special Needs    ☐ Leadership Skills    ☐ Business Practices    ☐ VPK  
☐ Legislation, Advocacy    ☐ Behavior Challenges, Social/Emotional    ☐ Parent Involvement    ☐ Credentials  
☐ EHS-Early Head Start    ☐ Infant/Toddler    ☐ Preschool    ☐ School-Age    ☐ STEM    ☐ Other \_\_\_\_\_

**Workshop format:** ☐ Lecture    ☐ Discussion    ☐ Loud/noisy    ☐ PowerPoint    ☐ Other \_\_\_\_\_

**Please specify if using a PowerPoint.** If so, we will assign you to a room with a screen and table with power cord.

**You must supply your own computer and projector.**

**Preference for workshop time:** ☐ Friday, June 26    ☐ AM or ☐ PM      ☐ Saturday, June 27    ☐ AM or ☐ PM  
 Please explain any type of unusual circumstances, room set up or special request.

**Resumé** must contain name, contact info, educational background or credential, work history, previous workshops presented, years in child care, and professional affiliations, associations, or organizations

**Submit the following information on the FFCCHA CEU Form** (request from [info@familychildcare.org](mailto:info@familychildcare.org)) **Note:** Please list contact information, workshop title, and description **as you want it printed** in the Conference program book. However, FFCCHA has right to edit all submissions.

**Primary Presenter** Name, Professional Job Title, Educational Level

**Secondary Presenter(s)** (if applicable) Name, Professional Job Title, Educational Level and all contact info

**Address** of Primary Presenter: Mailing Address, City, State, Zip

**Phone, Cell Phone and Email** of Primary Presenter (and Co-presenter if applicable)

**Spanish workshop Presenters** must submit Title, Description, and outline in **both** English and Spanish.

**Title of Workshop** that clearly and concisely describes its content

**Workshop Description for Program book** (50 words or less)

**Outline and concise description of topic, listing outcome objectives and method of evaluation**

**Please submit workshop applications via email to [conference@familychildcare.org](mailto:conference@familychildcare.org), [info@familychild.org](mailto:info@familychild.org)**

Need more information on **HOW to ENHANCE Minds?** Contact **Karan Hiester, Conference Coordinator**  
 via e-mail: [conference@familychildcare.org](mailto:conference@familychildcare.org) or call 386-689-3046





## Call for Exhibitors, Ads, & Donations

Florida Family Child Care Home Association, Inc.

### "Enhancing Our Minds...In 2026"

34<sup>th</sup> Annual Conference, June 24-28, 2026



Embassy Suites by Hilton Orlando Lake Buena Vista South, 4955 Kyns Heath Rd, Orlando, FL 34746

**Pay Online:** <https://familychildcare.org/product-category/ffccha-conference/>

Business Name: \_\_\_\_\_ Website: \_\_\_\_\_

Contact Person Name: \_\_\_\_\_ Title: \_\_\_\_\_

Business Address: \_\_\_\_\_

City: \_\_\_\_\_ State: \_\_\_\_\_ Zip Code: \_\_\_\_\_

Business Phone: \_\_\_\_\_ Email: \_\_\_\_\_

*Note: Unless notified otherwise, all information listed above for Exhibitors will be in the Conference Program Book.*

Service/Product: \_\_\_\_\_ Signature: \_\_\_\_\_

\_\_\_\_\_ **Yes!** We would like to ENHANCE MINDS and be an **EXHIBITOR on June 25-27:**  
Each space includes: ONE 6-foot bare table & one chair - **Thurs** Set-up 2-5pm & Opening 6-8:00pm,  
**Fri** 9am-11:30 1:30-5:30pm, **Sat** 9am-3:30pm (times may change) \_\_\_\_\_ **#of tables X \$ \_\_\_\_\_ = \$ \_\_\_\_\_**  
**Plus 2 door prizes (\$25 value each) Deadlines:** Early Bird: Jan 1 - April 30: \$250; if space available, May 1: \$300;  
after May 25: \$350 **WiFi:** ☐ yes ☐ no **Electric** order request: ☐ yes ☐ no

\_\_\_\_\_ **Yes!** We would like to ENHANCE MINDS and **ADVERTISE in the conference program book:**  
Email ads in color in **jpg** format. Deadline: April 15, 2026  
☐ Business Card \$100 ☐ 1/4page \$175 (3 1/2"x5") ☐ 1/2page \$250 (7 1/2"x5") ☐ 3/4 page \$350 (7 1/2"x7") ☐ Full page \$500 (7 1/2"x10")

\_\_\_\_\_ **Yes!** We would like to ENHANCE MINDS and **DONATE in-kind ITEMS:** (describe)  
☐ Door Prizes (\$25 minimum value) \_\_\_\_\_  
☐ Grand Prizes (\$100 value or more) \_\_\_\_\_  
☐ Centerpieces (30) for Luncheon Tables for prizes \_\_\_\_\_  
☐ Gifts (50) to recognize Nationally Accredited (NAFCC) Providers \_\_\_\_\_

\_\_\_\_\_ **Yes!** We would like to insert **Promotional Items** (300) into Conference Bag (no flyers, catalogs)  
☐ \$200 Contact us by May 15, 2026, to send to address below. Describe \_\_\_\_\_

\_\_\_\_\_ **Yes!** We would like to ENHANCE MINDS and **RESERVE SPACE on the Resource Sharing Table:**  
☐ \$75 Contact us by May 15, 2024 and send to address below. Describe \_\_\_\_\_

\_\_\_\_\_ **Yes!** We would like to ENHANCE MINDS and CONTRIBUTE a **MONETARY LEVEL** of SPONSORSHIP:

\_\_\_\_\_ **Curious Minds: \$250** \_\_\_\_\_ **Inquisitive Minds: \$1,500**  
\_\_\_\_\_ **Creative Minds: \$500** \_\_\_\_\_ **Innovative Minds: \$2,500**  
\_\_\_\_\_ **Caring Minds: \$1,000** \_\_\_\_\_ **The Ultimate Mind: \$5,000 or more**

**MIND MATCH** to match funds raised by parents up to a designated amount \$ \_\_\_\_\_  
All MIND Sponsorship levels include: *Program book listing and On-site signage; \$1,000 or more includes one exhibit table, and program book advertising at various sizes according to Sponsor Level.*

\_\_\_\_\_ **Yes!** We would like to ENHANCE MINDS & **SELECT A SPECIFIC REQUEST:**  
☐ Keynote Speakers ☐ Award Plaques ☐ Program Book ☐ 300 Bags ☐ Provider Celebration Night  
☐ Leader Recognition ☐ Audio Visual ☐ Appreciation Luncheon ☐ Name Tags ☐ Parent Choice Awards

**Deadlines: Jan. 1, 2026 for listing in Conference Brochure; Feb 17 for April listing in The Grapevine Newsletter; May 1 for listing in Conference Program Book; June 1 for listing at the conference**

**Make check payable to: FFCCHA Mail to: FFCCHA, 1859 Mango Tree Dr. Edgewater, FL 32141**  
**Need more information on HOW to ENHANCE Minds?**

Other contacts: Karan Hiester, Conference Coordinator, 386-689-3046 [conference@familychildcare.org](mailto:conference@familychildcare.org)  
Tammy Tener, Executive Director, 407-234-3473 [info@familychildcare.org](mailto:info@familychildcare.org)

Revised 9-25



# Save the Date!

## Enhancing Our Minds... in 2026



## FFCCHA Annual Conference

June 24-28, 2026

Embassy Suites by Hilton Orlando Lake Buena Vista South  
4955 Kyngs Heath Rd, Kissimmee, FL 34746

### Wednesday-Thursday Pre-Conference

FFCCHA Certified M.E.N.T.O.R. Training • Second Helping • Curriculum Training and more!

### Friday Luncheon Keynote

with FFCCHA Awards and Workshops

### Saturday Keynote

*"Hats Off To You: Thank You For Being Every Day Miracle Workers In Children and Families' Lives!"*

Holly Elissa Bruno

### Concilio Latino y Talleres en Español

Provider Celebration on Saturday Night!

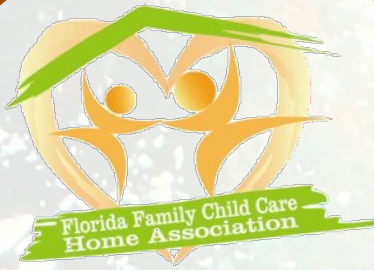
### Sunday Breakfast Keynote

with FFCCHA General Meeting

Visit [www.familychildcare.org](http://www.familychildcare.org) for more conference updates!







9207 Edgemont Lane  
Boca Raton, FL 33434

NON-PROFIT ORG  
U.S. POSTAGE  
**PAID**  
PERMIT NO. 4679  
JACKSONVILLE, FL

**NOVEMBER 8th KISSIMMEE, FL  
LEADERSHIP SUMMIT:  
Reserve hotel by Oct 24!  
Register by Nov 1!**

**Apply for a FFCCHA Officer, Rep  
or Chair Position!**

**Click here to [Reserve Your  
FFCCHA June 2026  
Conference Hotel NOW](#)**

**Apply for NAFCC Accreditation  
Scholarships!**

**NAFCC Conference 2026  
Chicago, IL!**

**Stay tuned for future trainings!**



**Happy Birthday!**